

# INSTRUCTION MANUAL

**2000 x 100mm (79" x 4")  
Zirconia Linishing Belt Pack  
36G**



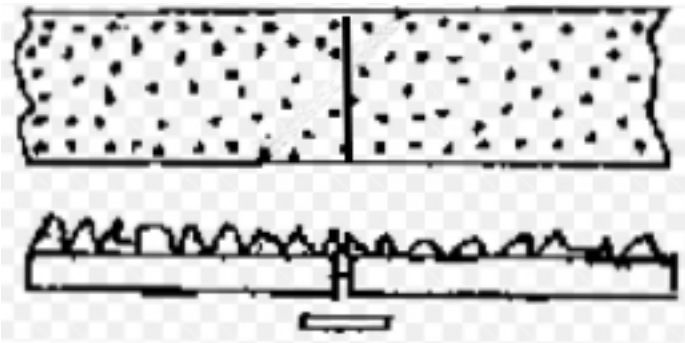
**A8085**



### Abrasive Belt Joint Information

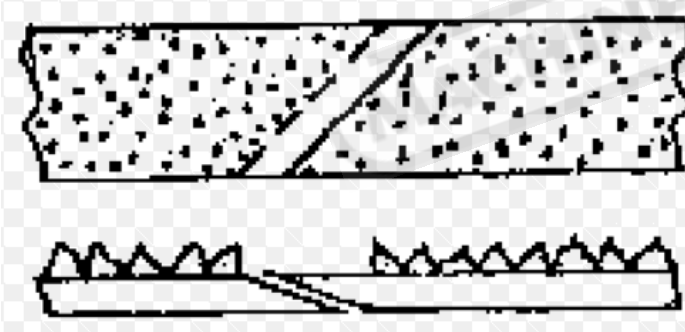
The following is a partial listing of belt joints that are available to be used. Special applications at times require special belt joints. This sheet provides information for the most common line of belt joints.

#### Butt Joint

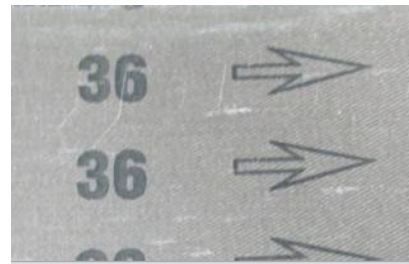


Strong butt joint with relief skive. Developed for smooth platen passage. Standard on most cloth belts 100 grit and finer. The joint is a bi-direction and the belt can be run in both directions.

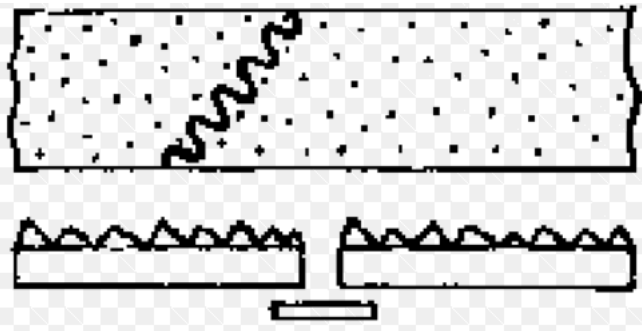
#### Overlap Joint



Overlap joint with top skive to reduce joint thickness at lap. Standard on most cloth belts 80 grit and coarser, but does have a negative. It is one directional only. For this reason the bulk belt product is always printed on the back with the direction arrow



#### Serpentine Joint



The serpentine joint with or without top skive is one of the strongest joints. These belts are bi-directional able to be run in either direction. All belts we sell to suit the Model L848 are Bi -Directional ( A8085 , A79403) with the serpentine joint.

The direction arrow on the back of the belt should be disregarded for belts with this type of joint.